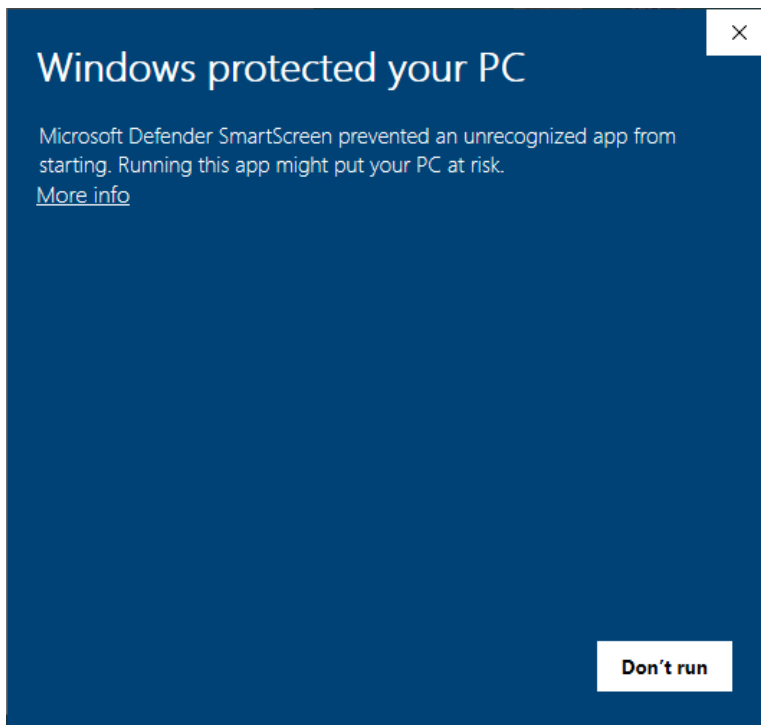


FuelCellsEtc

Instructions for Installing the CVM-1 Driver Correctly

Please print out this instruction booklet in order to continue the steps during the reboot sequences during the software installation.

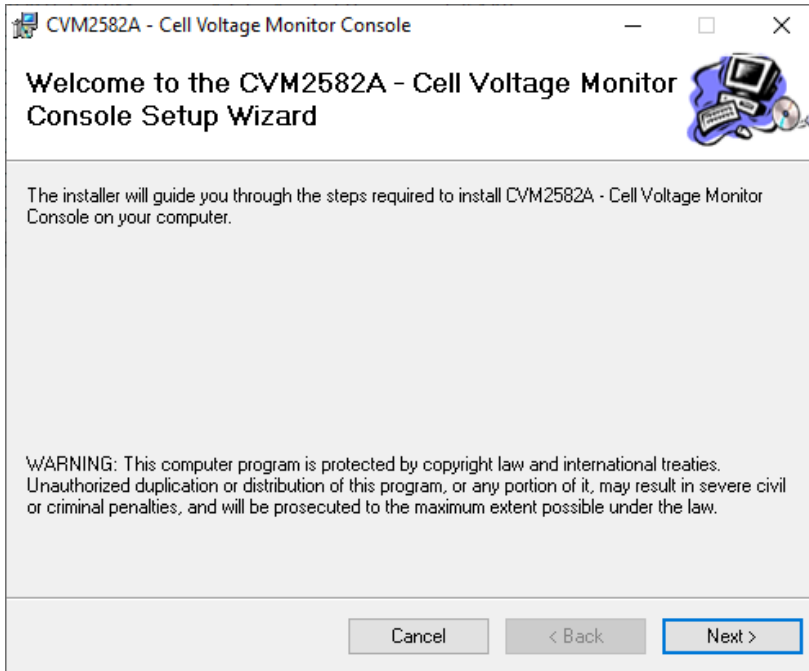
- 1) Download the installation zip file from <http://fuelcellsetc.com/store/DS/Cell-Voltage-Monitor-Software.zip> location.
- 2) Extract the zip file on your desktop.
- 3) The unzipped folder, by default, is named “Cell-Voltage-Monitor-Software”. There is a subfolder in inside the parent folder, named “CVM CD V1.0.38.10.10”. Open this folder.
- 4) Use “setup” application file in order to initiate the installation of the Cell Voltage Monitor software.
- 5) For Windows10 users: You may get the following popup window:



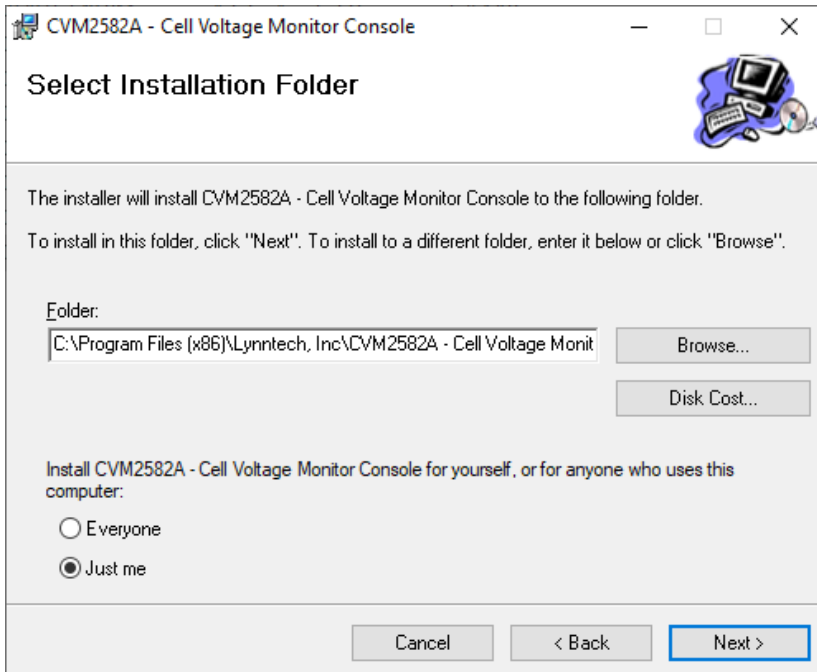
- 6) Click on More Info and Windows10 will allow you to install the software via “Run Anyway” option to continue the installation.

FuelCellsEtc

7) Next, you will see the following screen.

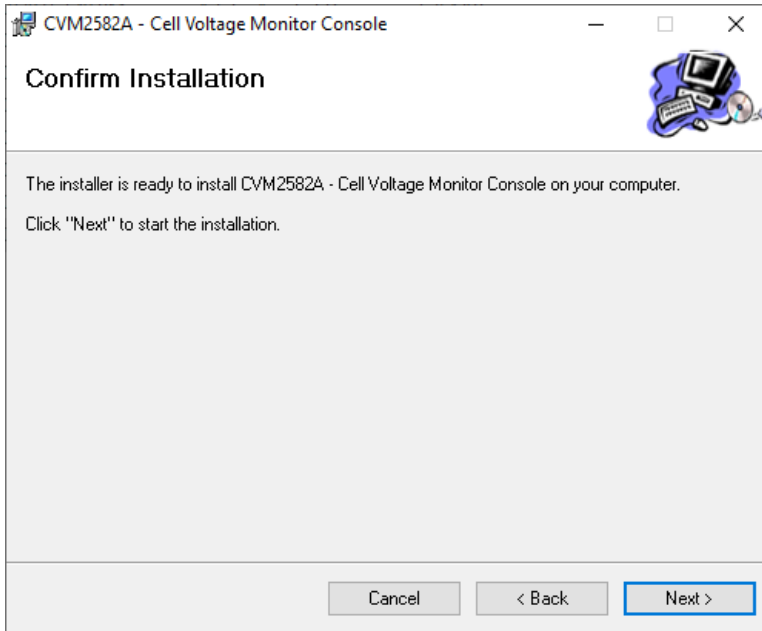


8) Choose Next. Then, you will see the next screen as follows:

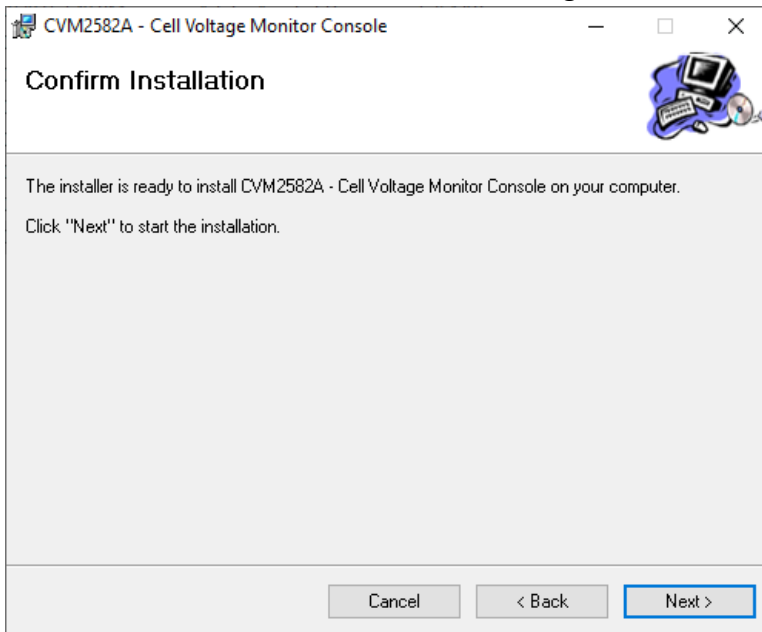


9) Choose either for "everyone" or "just me" and click Next. Then, you will see the next screen:

FuelCellsEtc

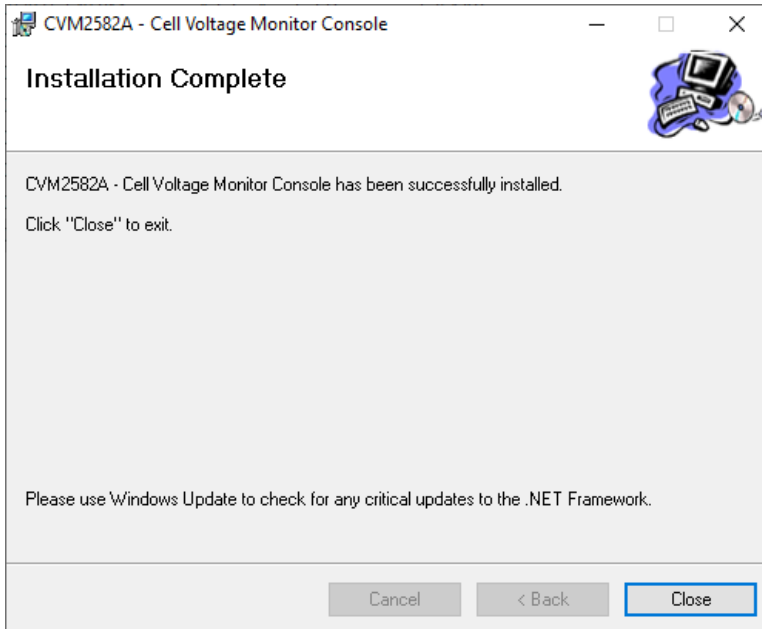


10) Click Next and the Windows' User Account Control will ask you to confirm the installation again. Click the Yes/OK option on the Window's User Account Control popup to continue. Then, click Next on the Cell Voltage Monitor Console to complete the installation.



FuelCellsEtc

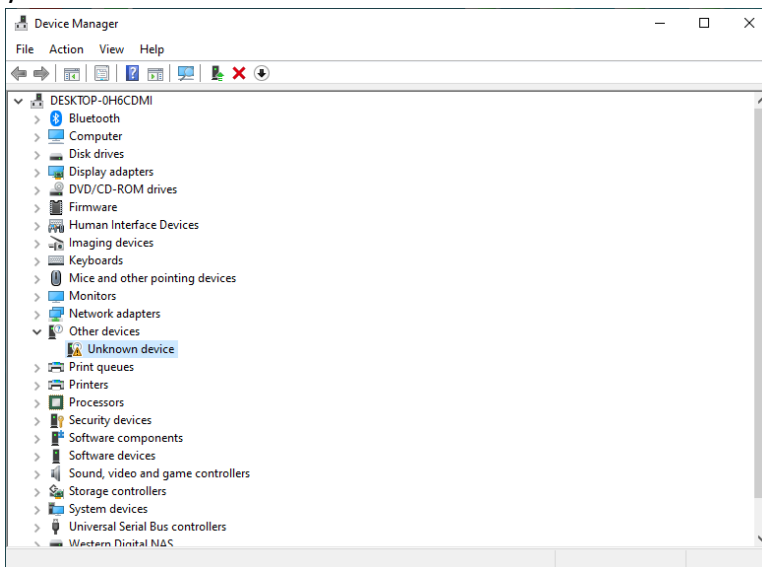
11) After the installation is complete, you should see the following screen.



12) Installation is technically not complete yet. The driver component for the CVM module needs to be re-installed after disabling the “Digital Signature Enforcement” on Windows 10.

13) Open your computer’s Control Panel and search for Device Manager. Open the Device Manager

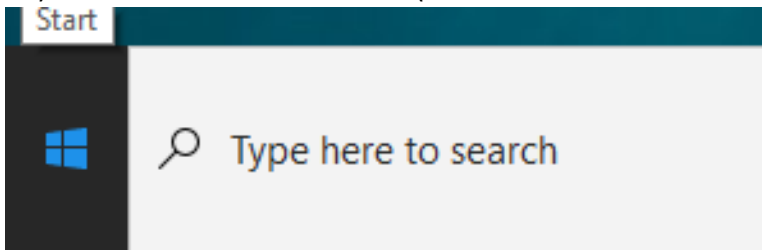
14) Connect the CVM module with a USB cable to your computer. In the Device Manager, you will see an “Unknown Device” under the Other Devices.



FuelCellsEtc

15) In order to successfully update the driver in the next steps, first, you need to disable the “Driver Signature Enforcement” on Windows 10.

16) Click on the Windows icon (also known as Start button) on your computer.

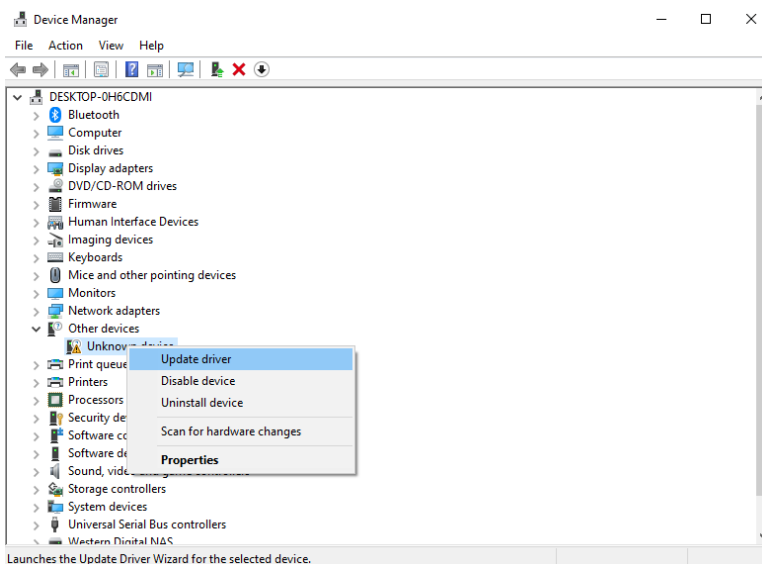


17) Hold the SHIFT key on your keyboard and select Power and then select Restart in order to reboot your computer. Continue to hold down the shift key while the computer is booting in order to access advanced options menu.

18) Choose the “Troubleshoot” option after the reboot, then choose “Advanced Options”, then select “Startup Settings” and finally, click “Restart”.

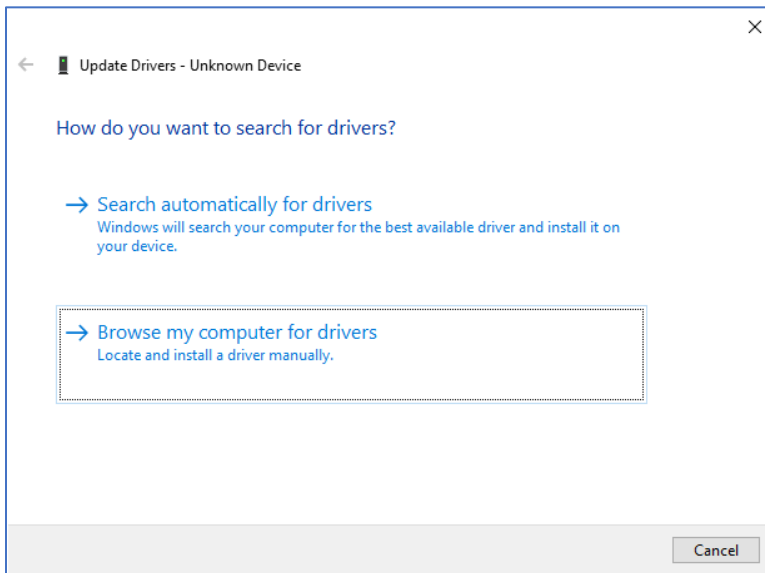
19) Next, press the number 7 on your keyboard in order to select the “disable driver signature enforcement” option from the shown list of items.

20) Go to Device Manager on your computer. Go to Other Devices and then select “unknown device”. Then, right click on the “unknown device” and select “update driver”.

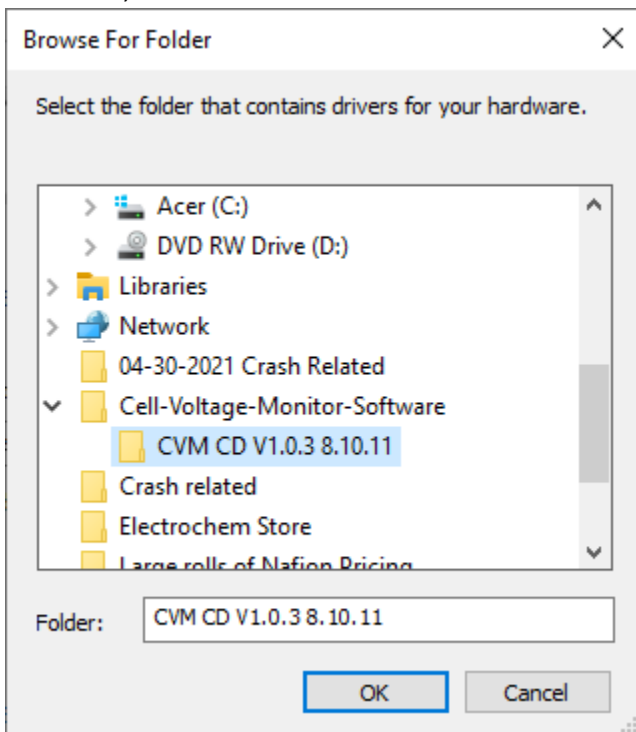


FuelCellsEtc

21) Then, select “Browse my computer for drivers” option on the next screen.

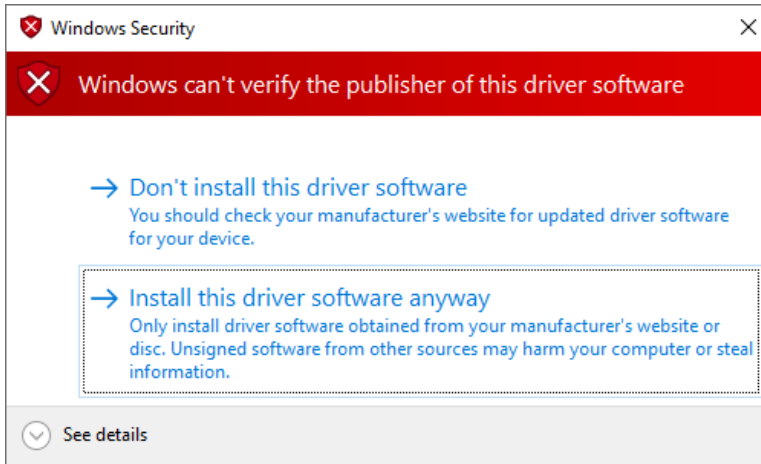


22) Then, browse your desktop to select the “CVM CD V.1.0.38.10.11” folder and then select OK. Then, select Next.



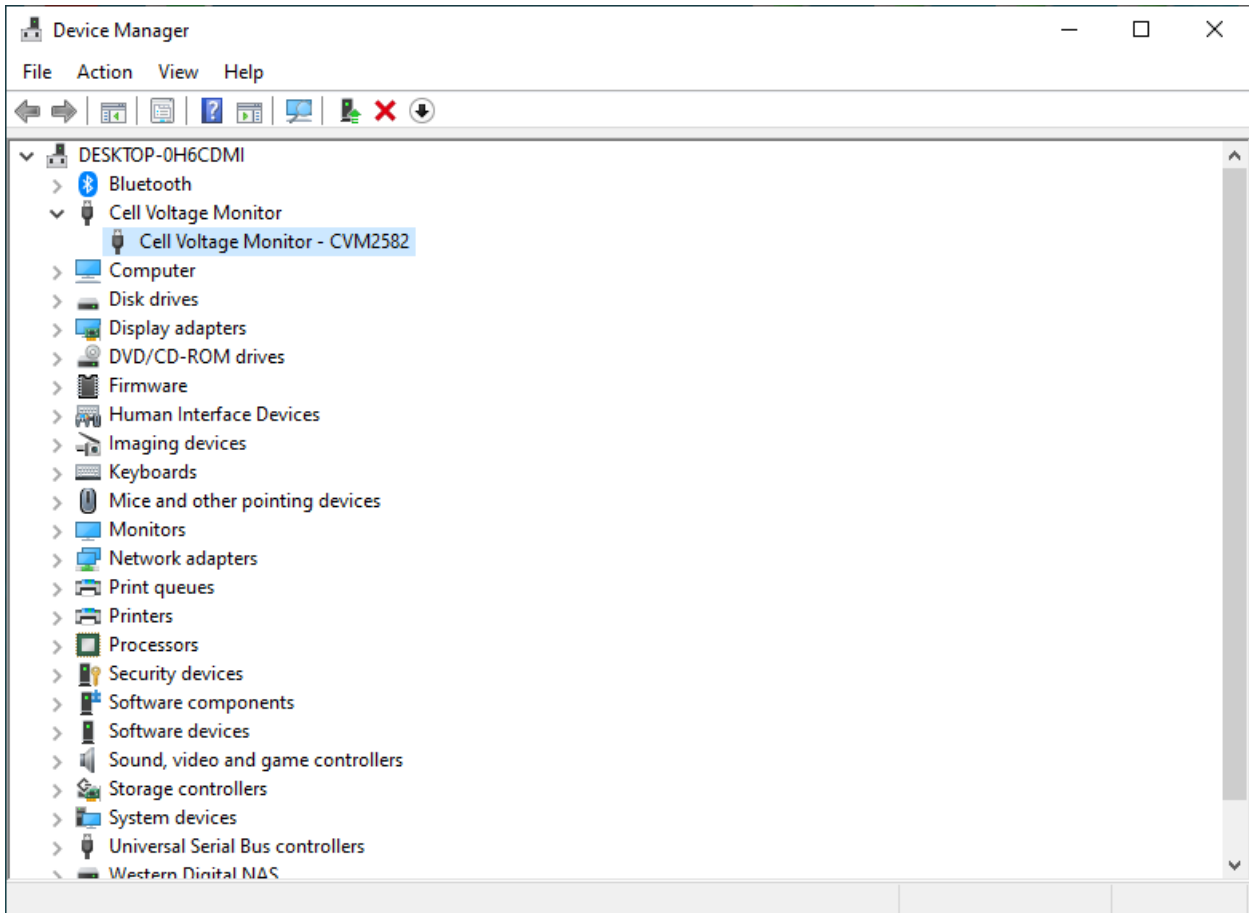
FuelCellsEtc

23) Windows is going to give you the following popup screen:



24) Choose "Install this driver software anyway" and complete the installation.

25) After this step, you should see the following on your Device Manager screen: Cell Voltage Monitor – CVM2582 as an identified hardware instead of an unknown device.



FuelCellsEtc

26) Click on the CVM2582 Cell Voltage Monitor shortcut on your desktop to initiate the software and access all other options. This includes the setup and configuration menu for the cell voltage monitor software.

27) At this point, the CVM module should have a steady red LED light indicating the successful linking of the CVM module to the computer AND a flashing yellow light that indicates the board is in the broadcasting mode.