

Cell Voltage Monitoring System



Highest Precision
Fastest Acquisition Rate
Lowest Power
T/C Option—Standard
Extra I/O Capabilities
OEM Options Available

Features and Advantages

Effective

- Provides an effective and useful research grade fuel cell or battery analysis tool

Stackable

- Can be daisy chained with multiple CVMs to provide up to 512 channels (virtually unlimited with USB)
- Provides a flexible solution for small to large fuel cell stacks, battery research, and other research applications

Easy to Configure and Operate

- Easily configured using FuelCellsEtc's CVM Analysis software to support different communication protocols, alarm trip-points, manipulate I/O, etc. for easy integration with other software or systems

Extensive Communications Capabilities

- USB, serial (RS-232/485), CAN bus

Temperature Measurement

- Two K-Type thermocouples directly with cold-junction compensation

Power Flexibility

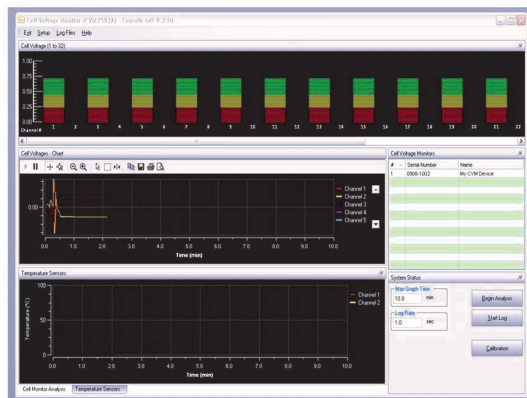
- External 8—30 VDC input or USB port powered

Specifications

- **USB (Universal Serial Bus)**
USB v2.0 high speed device; bus powered
- **CAN (Controller Area Network)**
Up to 16 possible slave addresses
- **RS-232/RS-485 Serial Interface**
Modbus Available
- **32-Channel Isolated Analog Input**
 $\pm 63\mu\text{V}$ resolution (16-bits)
0.05% Accuracy (NIST Calibrated)
 ± 2 VDC range/channel
5 kHz sample rate (full 32 channels)
1 kV Isolation
85 VDC Common Mode Rejection
- **2 K-Type Thermocouple Inputs**
0°C to 1024°C temperature range
0.25°C resolution
Internal Cold junction compensation
- **Additional Analog Inputs (Optional)**
14-Channels
10 bit resolution
0—2.048 VDC (5 VDC tolerant)
- **Additional Digital I/O (Optional)**
16-Channels
Independently configurable as I/O
3.3 VDC logic level (5 VDC tolerant)
- **On-Board Logging**
Supports data logging to microSD card as a CSV file for analysis at a later date
- **Configuration Software**
Included software application allows you to set up, log, and analyze up to 16 CVMs in one application
- **Software Development Tool-Kit**
Provided SDK allows developers to develop custom software applications DLL's and LabView VI's available
- **Power**
USB powered or 8—30 VDC external DC
Less than 2.5 watts total power
- **Dimensions**
4.7" x 4.1" x 1.2" (121 x 104 x 32 mm)
0.55 lb (250 g)

Configuration Software and Software Development Kit Included:

Custom software for stand alone operation as well as drivers and LabView examples for easy integration into your monitoring systems are included.



FuelCellsEtc

Contact Us For More Information:

Phone: 979.635.4706

Email: Askus@fuelcellsetc.com

Visit Our Online Store to Buy
Yours Today!

[Click here to go directly to our Cell Voltage Monitor.](#)

[Click here to go to our online store.](#)

If your browser does not support the links above please copy and paste the following in to your search bar: <http://fuelcellsetc.com/store/CVM1>